

724 Double Rack ElOven

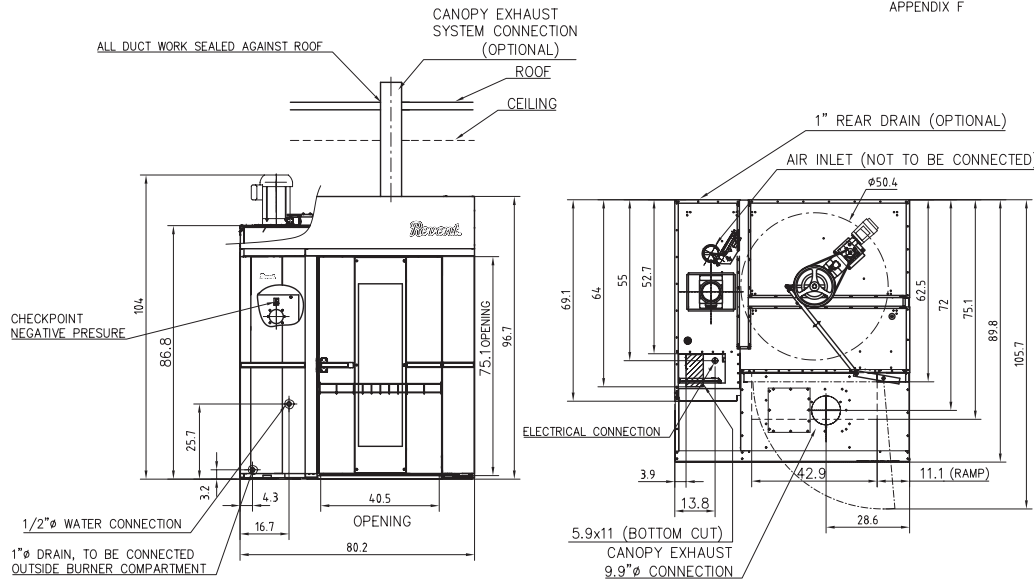


Available in gas, oil or electrically heated models. Accepts:
2 single racks (18" x 26" pans) or
1 double rack (18" x 26" pans or
20" x 30" pans).

The unique technology in a Revent oven will take your baking quality to an even higher level.

Revent TCC System (Total Convection Control)
Revent HVS System (High Volume Steam)

Revent[™]
More than Quality.



REVENT RACK OVEN 724 EL,
USA, 700-SERIES CANOPY

701283

Standard features

- > Revent TCC System
- > Revent HVS System
- > Revent LID System
- > Enclosed S/S tubular electrical heaters
- > Revent Wedge Installation System
- > Stainless Steel Design
- > GIAC (Graphic InterActive Control) Panel
- > Automatic Steam and Damper Control
- > Double glass door

Utility Requirements

Electrical

- > Electrical: available in most 3-phase voltages

Water and Drain

- > Water Supply : 1/2" NPT 60-65 PSI cold
- > Drain: 1" NPT, optional connection to rear

Ventilation

- > Over Pressure Duct:
 - Through door to canopy
- > Oven Damper Exhaust:
 - Through door to canopy
- > Canopy Port: 9.9" ϕ

724 Electrically heated		
Voltage	Heating	Fuse
3PH 208-220V+ N	37.5 + 30 kW	200 A
3PH 440-480V + 1 PH 115V	67.5 kW	125 A

NOTE:

Other voltages available, check with factory.
Limited warranty, one year parts+labor

Technical information

- > Maximum Heat Capacity: see table below
- > Temperature range: 95-572°F
- > Total shipping weight: 4288 lbs*
- > Minimum intake opening: 34.5" x 69.3" (standard 3-section delivery)
- > Minimum intake opening: 69.3" x 80.3" (optional one-piece shipment)
- > Minimum section tilt up height: 112.2" (without motor)
- > Swing Diameter: 50.39"
- > Max load of racklift and platform 882 lbs
- > Steam Generation 1.85gals/20sec at 482°F
- > Installation requirements: The oven must be installed on level noncombustible floor. The oven may be installed flush against a wall - only the front and top need to be left for access. The space on top of the oven must be well ventilated. The temperature may not exceed 120°F to avoid damage to electric components.

*Final shipping

Weights will depend on the final order specifications.

Continuous product development is a Revent policy. Therefore, we reserve the right to change specifications and/or design without prior notice. Pictures or drawings may include product options.

Revent sales representative:



Revent Incorporated

100 Ethel Road West, Piscataway, New Jersey 08854
Phone (732) 777-9433, Fax (732) 777-1187
Toll Free 800-822-9642
E-mail info@revent.com, www.revent.com