

723 Double Rack Oven

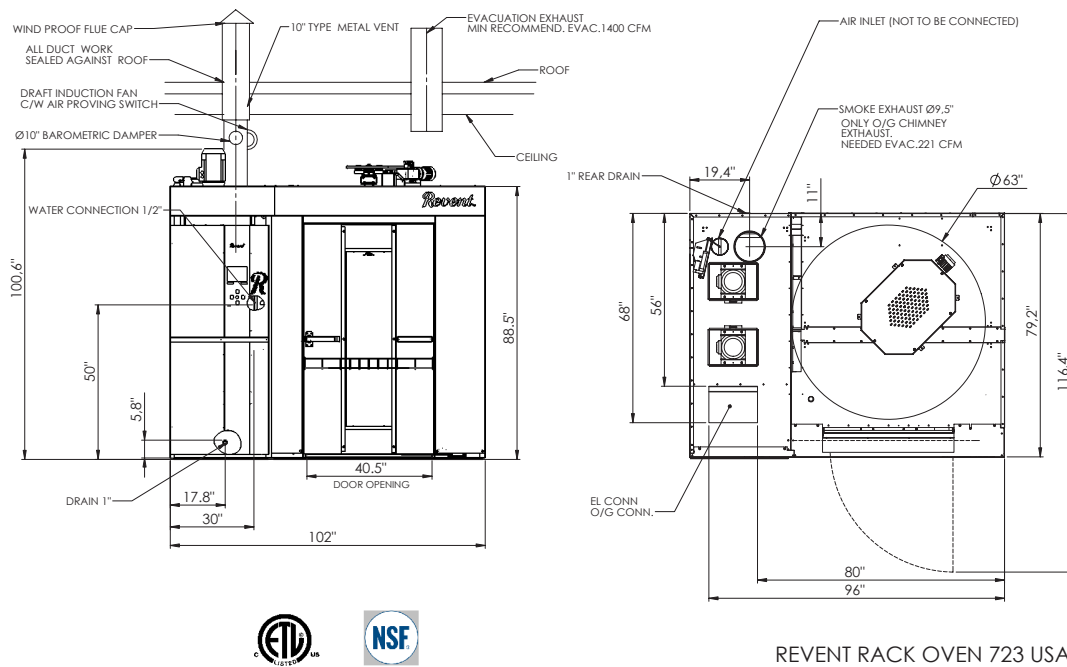


Available in gas, oil or electrically heated models. Accepts:
1 double rack with pan size 31.5"x23.6"
(European std, 800*600 mm)
Swing diameter 63"

The unique technology in a Revent oven will take your baking quality to an even higher level.

Revent TCC System (Total Convection Control)
Revent HVS System (High Volume Steam)

Revent[™]
More than Quality.



Standard features

- > Revent TCC System
- > Revent HVS System
- > Revent LID System
- > Revent Cross Line Heat Exchanger
- > Revent Wedge Installation System
- > Stainless Steel Design
- > GIAC (Graphic InterActive Control) Panel
- > Automatic Steam and Damper Control
- > Double glass door

Utility Requirements

Gas

- > Natural Gas: Indirect fired 1" drop to ¾" NPT connection
- > Liquid Propane: Indirect fired ¾" drop to ¾" NPT connection

Water and Drain

- > Water Supply : ½" NPT ø 60-65 PSI cold
- > Drain: 1" NPT, optional connection to rear

Ventilation

- > Over Pressure Duct:
Through door to canopy
- > Oven Damper Exhaust:
Through door to canopy
- > Canopy Port: 9.9" ø
- > Smoke Exhaust : 6.7" ø gas and oil only

723 Oil/gas heated		
Voltage	Heating	Fuse
3PH 208-220V+ N	477700 btuh	45 A
3PH 440-480V + 1 PH 115V	477700 btuh	20 A

723 Electrically heated		
Voltage	Heating	Fuse
3PH 208-220V+ N	60 + 52,5 kW	200 + 200 A
3PH 440-480V + 1 PH 115V	60 + 52,5 kW	100 + 100 A

NOTE:
Other voltages available, check with factory.
Limited warranty, one year parts+labor

Technical information

- > Maximum Heat Capacity: see table below
- > Temperature range: 95-572 °F
- > Total shipping weight: 6526 lbs*
- > Minimum intake opening: 40.4" x 79.5" (standard 3 section delivery)
- > Minimum intake opening: 79.5" x 102.4" (optional – one piece shipment)
- > Minimum section tilt up height: 122.1" (without motor)
- > Swing diameter: 63"
- > Max load of platform 1323 lbs
- > Steam Generation 2.9 gals/20sec at 482°F
- > Installation requirements: The oven must be installed on level noncombustible floor. The oven may be installed flush against a wall - only the front and top need to be left for access. The space on top of the oven must be well ventilated. The temperature may not exceed 120°F to avoid damage to electric components.

*Final shipping

Weights will depend on the final order specifications.

Continuous product development is a Revent policy. Therefore, we reserve the right to change specifications and/or design without prior notice. Pictures or drawings may include product options.

Revent sales representative:



Revent Incorporated

100 Ethel Road West, Piscataway, New Jersey 08854
Phone (732) 777-9433, Fax (732) 777-1187
Toll Free 800-822-9642
E-mail info@revent.com, www.revent.com